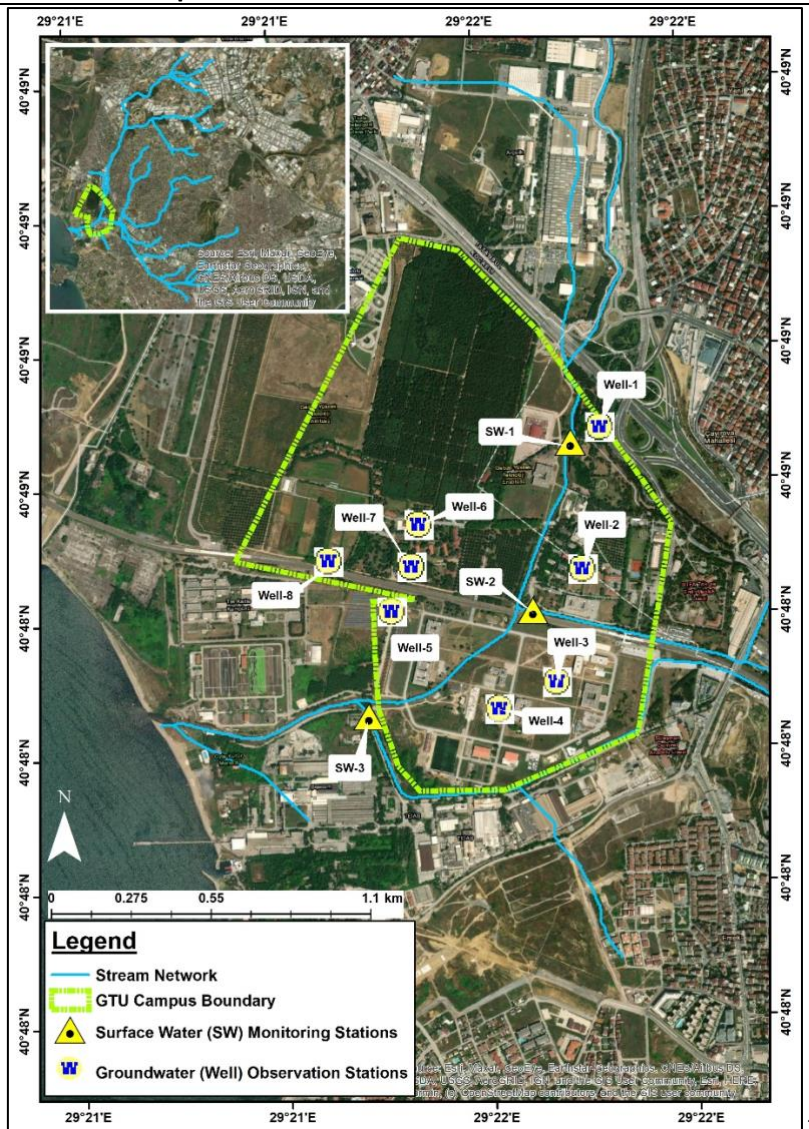


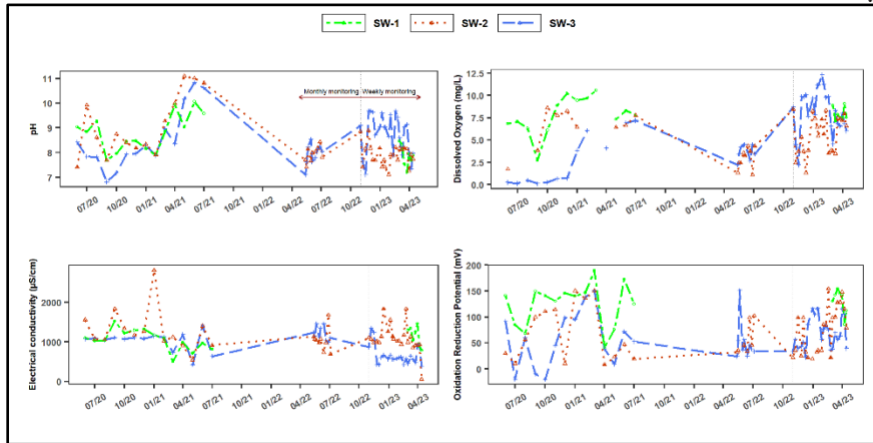
Template for Evidence(s) UI GreenMetric Questionnaire

University : Gebze Technical University
Country : Türkiye
Web Address : www.gtu.edu.tr

[4] Water (WR))

[4.5] Water pollution control in campus area





2

Example of water pollution control in the Gebze Technical University Campus

Description:

Policy

The Department of Environmental Engineering and the Institute of Earth and Marine Sciences at GTU have carried out national and international level projects aimed at protecting water resources.

Figure 1 shows sampling points for stream water (from Saz Creek running through the campus) and also groundwater wells in GTU campus.

Figure 2. The Saz Stream runs through the university campus and eventually empties into the Marmara Sea. Regular water quality monitoring is conducted in order to prevent pollution from the campus and take measures against off-campus sources of pollution. The ultimate goal is to protect the Saz Stream and ensure its sustained use, particularly for purposes such as landscape irrigation.

Applications

In 2022, two projects (with project numbers 121G066 and 119Y032) were completed with TUBITAK support to further this goal. Currently, the Saz Creek is monitored on a weekly basis, while eight wells on campus are evaluated monthly for their suitability as irrigation water sources.

